

SECTION 5 DISPLAY PRODUCTS

1. Monitors

1-1. Color video monitors	
PVM-20M4U	146
PVM-20M2U	147
PVM-20M2MDU	148
PVM-20N6U	149
PVM-20N5U	150
PVM-14M4U	151
PVM-14M2U	152
PVM-14M2MDU	153
PVM-14N6U	154
PVM-14N5U	155
PVM-8045Q	156
PVM-8043MD	157
PVM-8042Q	158
PVM-8040	159
PVM-5041Q	160
PVM-2950Q	161
PVM-20S1WU	162
PGM-200R1U	163
PGM-200R2U	164
PGM-100P1MD	165
1-2. Flat panel monitor	
PFM-500A1WU	166
1-3. LCD monitor	
LMD-1041	167
1-4. Monochrome video monitors	
PVM-136	168
PVM-137	168
PVM-135	169
PVM-96	169
PVM-97	170
PVM-95	170
PVM-4B1U	171
1-5. Monitor accessories	172

2. Projectors

2-1. Multiscan projectors	
VPH-G90U	177
VPH-G70Q	178
VPH-G70VRU	179
VPH-D50Q	180
VPH-D50HTU	181
RVP-6010Q	182
RVP-4015Q	183
2-2. Video projectors	
VPH-V20U	184
2-3. LCD projectors	
VPL-X2000U	185
VPL-X1000U	186
VPL-X600U	187
VPL-XC50U	188
VPL-S900U	189
VPL-S800U	190
VPL-S600U	191
VPL-S500U	192
VPL-SC50U	193
VPL-W400Q	194
2-4. Data projector	
VPD-S1800Q	195
2-5. Projector accessories	196
2-6. Lenses for LCD Projectors	214
2-7. Lenses for DLP Projector	217

3. Projection wall units (Videowall)

3-1. Projection wall units	
RVP-411DS	218
RVP-511DS	219
3-2. Projection wall accessories	220

4. Others

Digital scan converter	
DSC-1024HD	222

1-1 Color video monitors

19" PVM-20M4U (NTSC/PAL/SECAM/NTSC^{4,43})

Color Video Monitor

- HR Trinitron CRT assures a high resolution of 800TV lines
- Adopts SMPTE standard phosphors •Accepts component (Y/R-Y/B-Y), RGB, Y/C and composite signals •Beam current feedback circuit for stability in the color balance
- Optional component serial digital interface kits BKM-101C (video) / 102 (audio) available •Switchable aspect ratio (4:3 and 16:9) •Color temperature D65, D93 or user preset (3200K to 10000K) selectable •On-screen display for adjustment/operation •User preset function •Underscan, Blue Only and H/V delay mode available •Auto chroma/phase setup*¹ •Accepts external sync •Caption vision decoder (closed caption) •Auto/Manual degaussing •Minimizes magnetic field emission •Mountable into an EIA standard rack with the optional SLR-103A

Supplied accessories: 20-pin remote cable
Tally label
AC cord
AC plug holder
Operation manual

Optional accessories: BKM-101C (Component serial digital interface kit (video))
BKM-102 (Component serial digital interface kit (audio))
BKM-103 (Serial remote control kit for RS-422)
SLR-103A (Slide rail)
TU-1041U (Tuner unit)

Specifications

CRT

AG pitch: 0.31 mm
phosphor: SMPTE-C
CRT size: 53.3 cm (20-inch) diagonally
Visible picture size: 48.3 cm (19-inch) diagonally
Resolution: 800TV lines
Color system: NTSC, PAL, SECAM, NTSC^{4,43}*²
Aperture correction: 0 to +6 dB
Frequency response: LINE: 10.0 MHz (± 3 dB) *Y signal only
RGB: 10.0 MHz (± 3 dB)
Synchronization: AFC time constant 1.0 mS
Normal scan: 7% over scan
Under scan: 5% under scan
Linearity: H: less than 5%
V: less than 5%
Convergence: center: 0.5 mm (typical)
peripheral: 0.7 mm (typical)
Raster size stability: H: 1.0%
V: 1.5%
HV regulation: 4.0%
Color temperature: D65, D93, USER (3200K to 10000K)
Audio out: 0.8 W (distortion: less than 5%)
Power Consumption: 125 W (with SDI: 135 W)
AC input range: AC 100 to 240 V (50/60Hz)
Operation temperature: 0° to 35° C
Storage temperature: -10° to 40° C
Operating humidity: 35 to 85% (no condensation)
Storage humidity: 0 to 90%
Pressure: 880 to 1060 hPa
Dimensions: 450 (W) × 458 (H) × 503 (D) mm
(17³/₄ × 18¹/₈ × 19⁷/₈ inches)
Mass: 30.0 kg (66 lb 2 oz)

Inputs / Outputs

LINE A/B*³
1.0 Vp-p ± 6 dB
Loop-through BNC automatic 75 Ω termination*⁴

LINE C*³

Y: 1.0 Vp-p ± 6 dB
C: 0.3 Vp-p ± 6 dB
Loop-through Mini DIN 4-pin automatic
75 Ω termination*⁴



RGB / Component (selectable)*⁵

R/R-Y: 0.7 Vp-p ± 6 dB
G: 0.7 Vp-p ± 6 dB
Sync on G: 0.3 Vp-p ± 6 dB
Y: 0.7 Vp-p ± 6 dB
B/B-Y: 0.7 Vp-p ± 6 dB
Loop-through BNC automatic 75 Ω termination*⁴

External Sync

4 Vp-p ± 6 dB, negative
Loop-through BNC automatic 75 Ω termination*⁴

Safety Standards

UL-1950 / CSA-950, DHHS / DNHW, FCC Class A / IC Class A

*¹ Phase setup is for NTSC signals only.

*² The NTSC^{4,43} system refers to an NTSC color system in which the subcarrier frequency is modified to 4.43 MHz

*³ The Y/C input has priority over the Composite video input.

*⁴ 75 Ω termination is automatically set to OFF when connection is made to the OUT connector.

*⁵ Video amplitude 100/0/100 color bars.

1-1 Color video monitors

19" PVM-20M2U (NTSC/PAL/SECAM/NTSC_{4.43})

Color Video Monitor

- High resolution of 600TV lines with dark tint CRT for high contrast image reproduction
- Accepts component (Y/R-Y/B-Y), RGB, Y/C and composite signals
- Beam current feedback circuit for stability in the color balance
- Optional component serial digital interface kits BKM-101C (video) / 102 (audio) available
- Switchable aspect ratio (4:3 and 16:9)
- Color temperature D65, D93 or user preset (3200K to 10000K) selectable
- On-screen display for adjustment/operation
- User preset function
- Underscan, Blue Only and H/V delay mode available
- Auto chroma/phase setup*1
- Accepts external sync
- Caption vision decoder (closed caption)
- Auto/Manual degaussing
- Mountable into an EIA standard rack with the optional SLR-103A

- Supplied accessories:
- 20-pin remote cable
 - Tally label
 - AC cord
 - AC plug holder
 - Operation manual
- Optional accessories:
- BKM-101C (Component serial digital interface kit (video))
 - BKM-102 (Component serial digital interface kit (audio))
 - BKM-103 (Serial remote control kit for RS-422)
 - SLR-103A (Slide rail)
 - TU-1041U (Tuner unit)

Specifications

CRT

- AG pitch: 0.4 mm
- phosphor: P-22
- CRT size: 53.3 cm (20-inch) diagonally
- Visible picture size: 48.0 cm (19-inch) diagonally
- Resolution: 600TV lines
- Color system: NTSC, PAL, SECAM, NTSC_{4.43}*2
- Aperture correction: 0 to +6 dB
- Frequency response: LINE: 10.0 MHz (±3 dB) *Y signal only
RGB: 10.0 MHz (±3 dB)
- Synchronization: AFC time constant 1.0 mS
- Normal scan: 7% over scan
- Under scan: 5% under scan
- Linearity: H: less than 5%
V: less than 5%
- Convergence: center: 0.6 mm (typical)
peripheral: 1.0 mm (typical)
- Raster size stability: H: 1.0%
V: 1.5%
- HV regulation: 4.0%
- Color temperature: D65, D93, USER (3200K to 10000K)
- Audio out: 0.8 W (distortion: less than 5%)
- Power Consumption: 115 W (with SDI: 125 W)
- AC input range: AC 100 to 240 V (50/60 Hz)
- Operation temperature: 0° to 35° C
- Storage temperature: -10° to 40° C
- Operating humidity: 35 to 85% (no condensation)
- Storage humidity: 0 to 90%
- Pressure: 880 to 1060 hPa
- Dimensions: 450 (W) × 458 (H) × 503 (D) mm
(17³/₄ × 18¹/₈ × 19⁷/₈ inches)
- Mass: 30.0 kg (66 lb 2 oz)

Inputs / Outputs

LINE A/B*3

- 1.0 Vp-p±6 dB
- Loop-through BNC automatic 75Ω termination*4

LINE C*3

- Y: 1.0 Vp-p±6 dB
- C: 0.3 Vp-p±6 dB
- Loop-through Mini DIN 4-pin automatic 75Ω termination*4



RGB / Component (selectable)*5

- R/R-Y: 0.7 Vp-p±6 dB
- G: 0.7 Vp-p±6 dB
- Sync on G: 0.3 Vp-p±6 dB
- Y: 0.7 Vp-p±6 dB
- B/B-Y: 0.7 Vp-p±6 dB
- Loop-through BNC automatic 75Ω termination*4

External Sync

- 4 Vp-p±6 dB, negative
- Loop-through BNC automatic 75Ω termination*4

Safety Standards

- UL-1950 / CSA-950, DHHS / DNHW, FCC Class A / IC Class A

*1 Phase setup is for NTSC signals only.

*2 The NTSC_{4.43} system refers to an NTSC color system in which the subcarrier frequency is modified to 4.43 MHz

*3 The Y/C input has priority over the Composite video input.

*4 75Ω termination is automatically set to OFF when connection is made to the OUT connector.

*5 Video amplitude 100/0/100 color bars.

1-1 Color video monitors

19" PVM-20M2MDU (NTSC/PAL)

Color Video Monitor for medical use

- High resolution of 600TV lines at center
- Beam current feedback circuit for stable color reproduction
- Component (Y/R-Y/B-Y or RGB) input facility
- On screen display in multiple languages for adjustment/operation
- D65/D56/D93 User preset color temperature selectable
- Capable of observing two RGB input signals simultaneously with the RGB split mode
- 20% overscan/normal scan/underscan selection
- Blue only mode
- Accepts external sync
- RS-232C serial remote control capability
- 8V DC out
- Tally lamp
- Mountable into a 19-inch EIA standard rack with optional SLR-103A
- White color cabinet
- Complies with UL 2601-1, CSA 601.1 safety regulation

- Supplied accessories:
- AC power cord (1)
 - AC plug holder (1)
 - Side covers (2)
 - Control panel cover (1)
 - Panel hinges (2)
 - Remote control connector 8-pin mini DIN (1)
 - Instructions for Use (1)
 - RS-232C protocol manual
- Optional accessories: Slide rail kit SLR-103A



Specifications

color system:	NTSC/PAL (automatically selected)
Picture tube:	20-inch CRT with P-22 phosphor, visible picture size 479.8 mm (19-inch) measured diagonally
Horizontal resolution:	600TV lines at center (Video inputs)
Audio power output:	Monaural, 0.8 W with built-in speaker
Power requirements:	AC 100 to 240 V 1.5 to 0.6A, 50/60 Hz
Dimensions:	450 (W) × 457.5 (H) × 503 (D) mm (17 ³ / ₄ × 18 ¹ / ₈ × 19 ⁷ / ₈ inches)
Mass:	30.0 kg (66 lb 2 oz)
VIDEO	
LINE A	Loop-through BNC 1.0 Vp-p, sync negative, Automatic 75Ω termination*
LINE B	Loop-through Mini DIN 4-pin Y(luminance): 1.0 Vp-p, sync negative, Automatic 75Ω termination* C(chrominance): PAL: 0.3 Vp-p, Automatic 75Ω termination* NTSC: 0.286 Vp-p, Automatic 75Ω termination*
RGB/Component	A: Loop-through BNC R-Y/B-Y: 0.7 Vp-p, Automatic 75Ω termination* Y/Sync on G: 1 Vp-p, sync negative, Automatic 75Ω termination* R/G/B: 0.7 Vp-p, Automatic 75Ω termination* Sync: 4 Vp-p negative, Automatic 75Ω termination*
	B: BNC R-Y/B-Y: 0.7 Vp-p, 75Ω Y/Sync on G: 1 Vp-p, sync negative, 75Ω R/G/B: 0.7 Vp-p, 75Ω Sync: 4 Vp-p negative, 75Ω
AUDIO	
LINE A	Loop-through Phono -5 dBu, high impedance
LINE B	Loop-through Phono -5 dBu, high impedance
RGB/Component	A: Loop-through Phono -5 dBu, high impedance B: Phono -5 dBu, high impedance



* 75Ω termination is automatically set to OFF when connection is made to the OUT connector.

1-1 Color video monitors

19" PVM-20N6U_(NTSC/PAL/SECAM/NTSC4.43)

Color Video Monitor

- Resolution of 500TV lines •Beam current feedback circuit for stability in the color balance •Accepts composite video, Y/C and RGB signals •Switchable aspect ratio (4:3 and 16:9) •On-screen menu for adjustment/operation •Input channel can be selected via REMOTE terminal (Phono)
- Built-in speaker •One touch recall of last menu used (VOLUME, CONTRAST, BRIGHTNESS, CHROMA, and PHASE) •Mountable into a 19-inch EIA standard rack with the optional SLR-103A

Optional accessories: Slide rail kit SLR-103A

Specifications

Video signal system: EIA 525 lines, 60 fields/CCIR 625 lines, 50 fields (switching of EIA to CCIR or vice versa is automatically done)

Color system: NTSC/PAL/SECAM/NTSC_{4.43}*1

Picture tube: 53 cm (20-inch), HR Trinitron tube, visible picture size 48.0 cm (min.) (19-inch) measured diagonally, 90° deflection, P-22 phosphors

Horizontal resolution: 500TV lines at center

Audio power output: Monaural, 0.8 W with built-in speaker

Power requirements: AC 100 to 240 V, 50/60 Hz

Power consumption: 100 W

Dimensions: 449 (W) × 441 (H) × 502 (D) mm (17 11/16 × 17 3/8 × 19 3/4 inches)

Mass: 28 kg (61 lb 11 oz)

VIDEO

LINE A*2

Loop-through BNC
1.0 Vp-p, sync negative, Automatic 75Ω termination*3
Loop-through Mini DIN 4-pin
Y(luminance):
1.0 Vp-p, sync negative, Automatic 75Ω termination*3
C(chrominance):
NTSC: 0.286 Vp-p, Automatic 75Ω termination*3
PAL: 0.3 Vp-p, Automatic 75Ω termination*3

LINE B*2

BNC
1.0 Vp-p, sync negative, 75Ω
Mini DIN 4-pin
Y: 1.0 Vp-p, sync negative, 75Ω
C: NTSC: 0.286 Vp-p, 75Ω
PAL: 0.3 Vp-p, sync negative, 75Ω

RGB/Sync

BNC
R/G/B: 0.7 Vp-p, 75Ω
Sync on G: 0.3 Vp-p, 75Ω
Sync: 4 Vp-p, 75Ω

AUDIO

LINE A

Loop-through Phono
-5 dBu, high impedance

LINE B

Phono
-5 dBu, high impedance

RGB/Sync

Phono
-5 dBu, high impedance



DISPLAY
PRODUCTS

*1 The NTSC_{4.43} system refers to an NTSC color system in which the subcarrier frequency is modified to 4.43 MHz.

*2 The Y/C input has priority over the Composite video input.

*3 75Ω termination is automatically set to OFF when connection is made to the OUT connector.

1-1 Color video monitors

19" PVM-20N5U_(NTSC/PAL/SECAM/NTSC4.43)

Color Video Monitor

- Resolution of 500TV lines
- Beam current feedback circuit for stability in the color balance
- Accepts composite video and Y/C signals
- On-screen menu for adjustment/operation
- Built-in speaker
- One touch recall of last menu used (VOLUME, CONTRAST, BRIGHTNESS, CHROMA, and PHASE)
- Mountable into a 19-inch EIA standard rack with the optional SLR-103A

Optional accessories: Slide rail kit SLR-103A

Specifications

Video signal system: EIA 525 lines, 60 fields/CCIR 625 lines, 50 fields (switching of EIA to CCIR or vice versa is automatically done)

Color system: NTSC/PAL/SECAM/NTSC4.43*1

Picture tube: 53 cm(20-inch), HR Trinitron tube, visible picture size 48.0 cm(min.) (19-inch) measured diagonally, 90° deflection, P-22 phosphors

Horizontal resolution: 500TV lines at center

Audio power output: Monaural, 0.8 W with built-in speaker

Power requirements: AC 100 to 240 V, 50/60 Hz

Power consumption: 100 W

Dimensions: 449 (W) × 441 (H) × 502 (D) mm (17¹¹/₁₆ × 17³/₈ × 19³/₄ inches)

Mass: 28 kg (61 lb 11 oz)

VIDEO

LINE A*2

Loop-through BNC
1.0 Vp-p, sync negative, Automatic 75Ω termination*3
Loop-through Mini DIN 4-pin
Y(luminance):
1.0 Vp-p, sync negative, Automatic 75Ω termination*3
C(chrominance):
NTSC: 0.286 Vp-p, Automatic 75Ω termination*3
PAL: 0.3 Vp-p, Automatic 75Ω termination*3

LINE B*2

BNC
1.0 Vp-p, sync negative, 75Ω
Mini DIN 4-pin
Y: 1.0 Vp-p, sync negative, 75Ω
C: NTSC: 0.286 Vp-p, 75Ω
PAL: 0.3 Vp-p, sync negative, 75Ω

AUDIO

LINE A

Loop-through Phono
-5 dBu, high impedance

LINE B

Phono
-5 dBu, high impedance



*1 The NTSC4.43 system refers to an NTSC color system in which the subcarrier frequency is modified to 4.43 MHz.

*2 The Y/C input has priority over the Composite video input.

*3 75Ω termination is automatically set to OFF when connection is made to the OUT connector.

1-1 Color video monitors

13" PVM-14M4U (NTSC/PAL/SECAM/NTSC_{4.43})

Color Video Monitor

- HR Trinitron CRT assures a high resolution of 800TV lines
- Adopts SMPTE standard phosphors
- Accepts component (Y/R-Y/B-Y), RGB, Y/C and composite signals
- Beam current feedback circuit for stability in the color balance
- Optional component serial digital interface kits BKM-101C (video) / 102 (audio) available
- Switchable aspect ratio (4:3 and 16:9)
- Color temperature D65, D93 or user preset (3200K to 10000K) selectable
- On-screen display for adjustment/operation
- User preset function
- Underscan, Blue Only and H/V delay mode available
- Auto chroma/phase setup*¹
- Accepts external sync
- Caption vision decoder (closed caption)
- Auto/Manual degaussing
- Minimizes magnetic field emission
- Mountable into an EIA standard rack with the optional MB-502B and SLR-102

Supplied accessories: 20-pin remote cable
Tally label
AC cord
AC plug holder
Operation manual

Optional accessories: BKM-101C (Component serial digital interface kit (video))
BKM-102 (Component serial digital interface kit (audio))
BKM-103 (Serial remote control kit for RS-422)
MB-502B (Rack mounting bracket)
SLR-102 (Slide rail)
TU-1041U (Tuner unit)

Specifications

CRT

AG pitch: 0.25 mm
phosphor: SMPTE-C
CRT size: 37.1 cm (14-inch) diagonally
Visible picture size: 33.2 cm (13-inch) diagonally
Resolution: 800TV lines
Color system: NTSC, PAL, SECAM, NTSC_{4.43}*²
Aperture correction: 0 to +6 dB
Frequency response: LINE: 10.0 MHz (±3 dB) *Y signal only
RGB: 10.0 MHz (±3 dB)
Synchronization: AFC time constant 1.0 ms
Normal scan: 7% over scan
Under scan: 5% under scan
Linearity: H: less than 4%
V: less than 4%
Convergence: center: 0.4 mm (typical)
peripheral: 0.5 mm (typical)
Raster size stability: H: 1.0%
V: 1.5%
HV regulation: 3.5%
Color temperature: D65, D93, USER (3200K to 10000K)
Audio out: 0.8 W (distortion: less than 5%)
Power Consumption: 90 W (with SDI: 99 W)
AC input range: AC 100 to 240 V (50/60 Hz)
Operation temperature: 0° to 35° C
Storage temperature: -10° to 40° C
Operating humidity: 35 to 85% (no condensation)
Storage humidity: 0 to 90%
Pressure: 880 to 1060 hPa
Dimensions: 346 (W) × 340 (H) × 431 (D) mm
(13⁵/₈ × 13¹/₂ × 17 inches)
Mass: 16.7 kg (36 lb 13 oz)

Inputs / Outputs

LINE A/B*³
1.0 Vp-p±6 dB
Loop-through BNC automatic 75Ω termination*⁴

LINE C*³

Y: 1.0 Vp-p±6 dB
C: 0.3 Vp-p±6 dB
Loop-through Mini DIN 4-pin automatic
75Ω termination*⁴

*¹ Phase setup is for NTSC signals only.

*² The NTSC_{4.43} system refers to an NTSC color system in which the subcarrier frequency is modified to 4.43 MHz

*³ The Y/C input has priority over the Composite video input.

*⁴ 75Ω termination is automatically set to OFF when connection is made to the OUT connector.

*⁵ Video amplitude 100/100 color bars.



RGB / Component (selectable)*⁵

R/R-Y: 0.7 Vp-p±6 dB
G: 0.7 Vp-p±6 dB
Sync on G: 0.3 Vp-p±6 dB
Y: 0.7 Vp-p±6 dB
B/B-Y: 0.7 Vp-p±6 dB
Loop-through BNC automatic 75Ω termination*⁴

External Sync

4 Vp-p±6 dB, negative
Loop-through BNC automatic 75Ω termination*⁴

Safety Standards

UL-1950 / CSA-950, DHHS / DNHW, FCC Class A / IC Class A

1-1 Color video monitors

13" PVM-14M2U (NTSC/PAL/SECAM/NTSC_{4.43})

Color Video Monitor

- High resolution of 600TV lines with dark tint CRT for high contrast image reproduction
- Accepts component (Y/R-Y/B-Y), RGB, Y/C and composite signals
- Beam current feedback circuit for stability in the color balance
- Optional component serial digital interface kits BKM-101C (video) / 102 (audio) available
- Switchable aspect ratio (4:3 and 16:9)
- Color temperature D65, D93 or user preset (3200K to 10000K) selectable
- On-screen display for adjustment/operation
- User preset function
- Underscan, Blue Only and H/V delay mode available
- Auto chroma/phase setup*¹
- Accepts external sync
- Caption vision decoder (closed caption)
- Auto/Manual degaussing
- Mountable into an EIA standard rack with the optional MB-502B and SLR-102

Supplied accessories: 20-pin remote cable

Tally label
AC cord
AC plug holder
Operation manual

Optional accessories: BKM-101C (Component serial digital interface kit (video))
BKM-102 (Component serial digital interface kit (audio))
BKM-103 (Serial remote control kit for RS-422)
MB-502B (Rack mounting bracket)
SLR-102 (Slide rail)
TU-1041U (Tuner unit)

Specifications

CRT

AG pitch: 0.25 mm

phosphor: P-22

CRT size: 37.1 cm (14-inch) diagonally

Visible picture size: 33.2 cm (13-inch) diagonally

Resolution: 600TV lines

Color system: NTSC, PAL, SECAM, NTSC_{4.43}*²

Aperture correction: 0 to +6 dB

Frequency response: LINE: 10.0 MHz (±3dB) *Y signal only

RGB: 10.0 MHz (±3dB)

Synchronization: AFC time constant 1.0 ms

Normal scan: 7% over scan

Under scan: 5% under scan

Linearity: H: less than 4%

V: less than 4%

Convergence: center: 0.4 mm (typical)

peripheral: 0.5 mm (typical)

Raster size stability: H: 1.0%

V: 1.5%

HV regulation: 3.5%

Color temperature: D65, D93, USER (3200K to 10000K)

Audio out: 0.8 W (distortion: less than 5%)

Power Consumption: 90 W (with SDI: 99 W)

AC input range: AC100 to 240 V (50/60 Hz)

Operation temperature: 0° to 35° C

Storage temperature: -10° to 40° C

Operating humidity: 35 to 85% (no condensation)

Storage humidity: 0 to 90%

Pressure: 880 to 1060 hPa

Dimensions: 346 (W) × 340 (H) × 431 (D) mm

(13³/₈ × 13¹/₂ × 17 inches)

Mass: 16.7 kg (36 lb 13 oz)

Inputs / Outputs

LINE A/B*³

1.0 Vp-p±6 dB

Loop-through BNC automatic 75Ω termination*⁴

LINE C*³

Y: 1.0 Vp-p±6 dB

C: 0.3 Vp-p±6 dB

Loop-through Mini DIN 4-pin automatic*⁴

75Ω termination



RGB / Component (selectable)*⁵

R/R-Y: 0.7 Vp-p±6 dB

G: 0.7 Vp-p±6 dB

Sync on G: 0.3 Vp-p±6 dB

Y: 0.7 Vp-p±6 dB

B/B-Y: 0.7 Vp-p±6 dB

Loop-through BNC automatic 75Ω termination*⁴

External Sync

4 Vp-p±6 dB, negative

Loop-through BNC automatic 75Ω termination*⁴

Safety Standards

UL-1950 / CSA-950, DHHS / DNHW, FCC Class A / IC Class A

*¹ Phase setup is for NTSC signals only.

*² The NTSC_{4.43} system refers to an NTSC color system in which the subcarrier frequency is modified to 4.43 MHz

*³ The Y/C input has priority over the Composite video input.

*⁴ 75Ω termination is automatically set to OFF when connection is made to the OUT connector.

*⁵ Video amplitude 100/0/100 color bars.

1-1 Color video monitors

13" PVM-14M2MDU (NTSC/PAL)

Color Video Monitor for medical use

- High resolution of 600TV lines at center
- Beam current feedback circuit for stable color reproduction
- Component (Y/R-Y/B-Y or RGB) input facility
- On-screen display in multiple language for adjustment/operation
- D65/D56/D93/ User preset color temperature selectable
- Capable of observing two RGB input signals simultaneously with the RGB split mode
- 20% overscan/normal scan/underscan selection
- Blue only mode
- Accepts external sync
- RS-232C serial remote control capability
- 8V DC out
- Tally lamp
- Mountable into a 19-inch EIA standard rack with optional MB-502B and SLR-102
- White color cabinet
- Complies with UL 2601-1, CSA 601.1 safety regulation

- Supplied accessories:
- AC power cord (1)
 - AC plug holder (1)
 - Side covers (2)
 - Control panel cover (1)
 - Panel hinges (2)
 - Remote control connector 8-pin mini DIN (1)
 - Instructions for Use (1)
 - RS-232C protocol manual (1)
- Optional accessories:
- Mounting bracket MB-502B
 - Slide rail kits SLR-102



Specifications

Color system:	NTSC/PAL (automatically selected)
Picture tube:	14-inch CRT with P-22 phosphors, visible picture size 331.6 mm (13-inch) measured diagonally
Horizontal resolution:	600TV lines at center (Video inputs)
Audio power output:	Monaural, 0.8 W with built-in speaker
Power requirements:	AC 100 to 240 V 1.2 to 0.5 A, 50/60 Hz
Dimensions:	346 (W) × 340 (H) × 430.5 (D) mm (13 ⁵ / ₈ × 13 ¹ / ₂ × 17 inches)
Mass:	16.7 kg (37 lb 8 oz)
VIDEO	
LINE A	Loop-through BNC 1.0 Vp-p, sync negative, Automatic 75Ω termination*
LINE B	Loop-through Mini DIN 4-pin Y(luminance): 1.0 Vp-p, sync negative, Automatic 75Ω termination* C(chrominance): PAL: 0.3 Vp-p, Automatic 75Ω termination* NTSC: 0.286 Vp-p, Automatic 75Ω termination*
RGB/Component	A: Loop-through BNC R-Y/B-Y: 0.7 Vp-p, Automatic 75Ω termination* Y/Sync on G: 1Vp-p, sync negative, Automatic 75Ω termination* R/G/B: 0.7 Vp-p, Automatic 75Ω termination* Sync: 4 Vp-p negative, Automatic 75Ω termination* B: BNC R-Y/B-Y: 0.7 Vp-p, 75Ω Y/Sync on G: 1 Vp-p, sync negative, 75Ω R/G/B: 0.7 Vp-p, 75Ω Sync: 4 Vp-p negative, 75Ω
AUDIO	
LINE A	Loop-through Phono -5 dBu, high impedance
LINE B	Loop-through Phono -5 dBu, high impedance
RGB/Component	A: Loop-through Phono -5 dBu, high impedance B: Phono -5 dBu, high impedance

* 75Ω termination is automatically set to OFF when connection is made to the OUT connector.

1-1 Color video monitors

13" PVM-14N6U (NTSC/PAL/SECAM/NTSC4.43)

Color Video Monitor

- Resolution of 500TV lines
- Beam current feedback circuit for stability in the color balance
- Accepts composite video, Y/C and RGB signals
- Switchable aspect ratio (4:3 and 16:9)
- On-screen menu for adjustment/operation
- Input channel can be selected via REMOTE terminal (Phono)
- Built-in speaker
- One touch recall of last menu used (VOLUME, CONTRAST, BRIGHTNESS, CHROMA, and PHASE)
- Mountable into a 19-inch EIA standard rack with the optional MB-502B and SLR-102

Optional accessories: Rack mounting bracket kit MB-502B
Slide rail kit (used with the MB-502B) SLR-102

Specifications

Video signal system: EIA 525 lines, 60 fields/CCIR 625 lines, 50 fields (switching of EIA to CCIR or vice versa is automatically done)

Color system: NTSC/PAL/SECAM/NTSC4.43*1

Picture tube: 37.1 cm (14-inch), HR Trinitron tube, visible picture size 33.2 cm (min.) (13-inch) measured diagonally, 90° deflection, P-22 phosphors

Horizontal resolution: 500TV lines at center

Audio power output: Monaural, 0.8 W with built-in speaker

Power requirements: AC 100 to 240 V, 50/60 Hz

Power consumption: 80 W

Dimensions: 346 (W) × 340 (H) × 414 (D) mm (13⁵/₈ × 13³/₈ × 16⁵/₁₆ inches)

Mass: 15 kg (33 lb 1 oz)

VIDEO

LINE A*2

Loop-through BNC
1.0 Vp-p, sync negative, Automatic 75Ω termination*3
Loop-through Mini DIN 4-pin
Y(luminance): 1.0 Vp-p, sync negative, Automatic 75Ω termination*3
C(chrominance): NTSC: 0.286 Vp-p, Automatic 75Ω termination*3
PAL: 0.3 Vp-p, Automatic 75Ω termination*3

LINE B*2

BNC
1.0 Vp-p, sync negative, 75Ω
Mini DIN 4-pin
Y: 1.0 Vp-p, sync negative, 75Ω
C: NTSC: 0.286 Vp-p, 75Ω
PAL: 0.3 Vp-p, sync negative, 75Ω

RGB/Sync

BNC
R/G/B: 0.7 Vp-p, 75Ω
Sync on G: 0.3 Vp-p, 75Ω
Sync: 4 Vp-p, 75Ω

AUDIO

LINE A

Loop-through Phono
-5 dBu, high impedance

LINE B

Phono
-5 dBu, high impedance

RGB/Sync

Phono
-5 dBu, high impedance



*1 The NTSC4.43 system refers to an NTSC color system in which the subcarrier frequency is modified to 4.43 MHz.

*2 The Y/C input has priority over the Composite video input.

*3 75Ω termination is automatically set to OFF when connection is made to the OUT connector.

1-1 Color video monitors

13" PVM-14N5U_(NTSC/PAL/SECAM/NTSC4.43)

Color Video Monitor

- Resolution of 500TV lines •Beam current feedback circuit for stability in the color balance •Accepts composite video and Y/C signals •On-screen menu for adjustment/operation
- Built-in speaker •One touch recall of last menu used (VOLUME, CONTRAST, BRIGHTNESS, CHROMA, and PHASE) •Mountable into a 19-inch EIA standard rack with the optional MB-502B and SLR-102

Optional accessories: Rack mounting bracket kit MB-502B
Slide rail kit (used with the MB-502B) SLR-102

Specifications

Video signal system: EIA 525 lines, 60 fields/CCIR 625 lines, 50 fields (switching of EIA to CCIR or vice versa is automatically done)

Color system: NTSC/PAL/SECAM/NTSC4.43*1

Picture tube: 37.1 cm (14-inch), HR Trinitron tube, visible picture size 33.2 cm (min.) (13-inch) measured diagonally, 90° deflection, P-22 phosphors

Horizontal resolution: 500TV lines at center

Audio power output: Monaural, 0.8 W with built-in speaker

Power requirements: AC 100 to 240 V, 50/60 Hz

Power consumption: 80W

Dimensions: 346 (W) × 340 (H) × 414 (D) mm (13⁵/₈ × 13³/₈ × 16⁵/₁₆ inches)

Mass: 15 kg (33 lb 1 oz)

VIDEO

LINE A*2

Loop-through BNC
1.0 Vp-p, sync negative, Automatic 75Ω termination*3

Loop-through Mini DIN 4-pin

Y(luminance):
1.0 Vp-p, sync negative, Automatic 75Ω termination*3

C(chrominance):
NTSC: 0.286 Vp-p, Automatic 75Ω termination*3
PAL: 0.3 Vp-p, Automatic 75Ω termination*3

LINE B*2

BNC
1.0 Vp-p, sync negative, 75Ω

Mini DIN 4-pin

Y: 1.0 Vp-p, sync negative, 75Ω

C: NTSC: 0.286 Vp-p, 75Ω
PAL: 0.3 Vp-p, sync negative, 75Ω

AUDIO

LINE A Loop-through Phono
-5 dBu, high impedance

LINE B Phono
-5 dBu, high impedance



DISPLAY
PRODUCTS

*1 The NTSC4.43 system refers to an NTSC color system in which the subcarrier frequency is modified to 4.43 MHz.

*2 The Y/C input has priority over the Composite video input.

*3 75Ω termination is automatically set to OFF when connection is made to the OUT connector.

1-1 Color video monitors

8" PVM-8045Q (NTSC/PAL/SECAM/NTSC_{4.43})

For picture evaluation in studio, ENG/EFP applications

- Aspect ratio is switchable (4:3 and 16:9) with the 16:9 button on the front panel
- High resolution CRT provides 450 TV lines at center (composite video)
- Stable color temperature from beam current feedback circuit
- Analog component level selectable between BETA and SMPTE/N10 by a rear panel slide switch
- NTSC comb filter
- Accepts external sync/sync on Green
- Tally input
- Color temperature D65
- Blue only, H/V delay, Underscan capability
- Built-in speaker and monitoring amplifier
- AC/DC operation
- Front panel degauss button
- EIA standard rack mountable with a second PVM-8045Q (or an optional blank panel MB-509) by using an optional MB-507 rack mounting bracket

Supplied accessories: AC power cord, Mini DIN 8-pin connector with cable (cable length 350 mm, 13 7/8 inches), Tally number plates (12 pcs: No.1 to 5, A, B, C, P, R, white × 2 pcs), Operation manual

Optional accessories: TV tuner unit TU-1041U
 Monitor ENG kit VF-505 (Monitor hood and cord reel)
 Rack mounting bracket MB-507
 Blank panel MB-509
 Battery adaptor DC-L10
 Rechargeable lithium-ion battery BP-L60A
 Rechargeable lithium-ion battery BP-L90A
 Rechargeable battery pack NP-1B
 Rechargeable battery pack BP-90A
 Battery case (for BP-90A) DC-210
 Battery charger (for four BP-L60A or BP-L90A) BC-L100
 Battery charger (for four NP-1Bs) BC-1WD
 Battery charger (for four NP-1Bs and four BP-90A) BC-410



Specifications

Video signal system: EIA 525 lines, 60 fields/CCIR 625 lines, 50 fields (switching of EIA to CCIR or vice versa is automatically done)

Color system: NTSC/PAL/SECAM/NTSC_{4.43}*1 (automatically selected)

Picture tube: 22cm (9-inch) HR Trinitron tube, visible picture size 19.7cm (8-inch) measured diagonally, 70° deflection

Horizontal resolution: 450TV lines at center

Audio power output: Monaural, 0.5W with built-in speaker

Power requirements: AC: 100 to 240V 0.7 to 0.4A, 50/60Hz
 DC: 12V 3.7A

Power consumption: AC: 43W
 DC: 40W

Dimensions: 217(W) × 217(H) × 352.5(D) mm (8 5/8 × 8 5/8 × 14 inches)

Mass: 8.2 kg (18 lb)

VIDEO

LINE A

Composite*2: Loop-through BNC
 1Vp-p, sync negative, Automatic 75Ω termination*3

Y/C*2: Loop-through Mini DIN 4-pin
 Y (luminance): 1Vp-p, sync negative, Automatic 75Ω termination*3

C (chrominance):
 NTSC: 0.286Vp-p, Automatic 75Ω termination*3
 PAL: 0.3Vp-p, Automatic 75Ω termination*3

LINE B

Composite: Loop-through BNC
 1Vp-p, sync negative, Automatic 75Ω termination*3

RGB/Component*4 BNC
 R/R-Y: Non-composite: 0.7Vp-p, 75Ω
 Sync on Green/G/Y: Composite: 1Vp-p, sync negative, 75Ω
 Non-composite: 0.7Vp-p, 75Ω
 B/B-Y: Non-composite: 0.7Vp-p, 75Ω

External sync

Loop-through BNC
 4Vp-p negative, Automatic 75Ω termination*3

Tally
 DC
 XLR 4-pin

AUDIO

LINE A

Loop-through Phono
 -5dBu, high impedance

LINE B

Loop-through Phono
 -5dBu, high impedance

RGB/Component

Phono
 -5dBu, high impedance

*1 The NTSC_{4.43} system refers to an NTSC color system in which the subcarrier frequency is modified to 4.43MHz.

*2 The Y/C input has priority over the Composite video input.

*3 75Ω termination is automatically set to OFF when connection is made to the OUT connector.

*4 Video amplitude 100/0/100 colour bars.

1-1 Color video monitors

8" PVM-8043MD (NTSC/PAL/NTSC_{4.43})

Color Video Monitor for medical use

- High resolution of 450TV lines at center
- Beam current feedback circuit for stable color reproduction
- Color temperature 6500K
- 19-inch EIA standard rack mountable with a second PVM-8043MD or the optional blank panel MB-509 by using an optional MB-507 rack mounting bracket
- White color cabinet
- Complies with IEC-601-1 safety regulation

Supplied accessories: Splash proof adaptor
Front panel cover
Operation manual

Optional accessories: Rack mounting bracket MB-507
Blank panel MB-509

Specifications

General

Video signal system: EIA 525 lines, 60 fields/CCIR 625 lines, 50 fields (switching of EIA to CCIR or vice versa is automatically done)

Color system: NTSC/PAL/NTSC_{4.43}*1 (automatically selected)

Picture tube: 22 cm (9-inch) HR Trinitron tube, visible picture size 19.7 cm (8-inch) measured diagonally, 70° deflection

Horizontal resolution: 450TV lines

Audio power output: Monaural, 0.5 W with built-in speaker

Power requirements: AC 120 V*2, 0.7 to 0.4 A, 50/60 Hz

Power consumption: 45 W

Dimensions: 217 (W) × 217 (H) × 352.5 (D) mm (8⁵/₈ × 8⁵/₈ × 14 inches)

Mass: 7.8 kg (17 lb 3 oz)

VIDEO

LINE A

Composite*3: Loop-through BNC
1.0 Vp-p, sync negative, Automatic 75Ω termination*4

Y/C*3: Loop-through 4-pin mini DIN
Y(luminance);
1.0 Vp-p, sync negative, Automatic 75Ω termination*4
C(chrominance);
NTSC: 0.286 Vp-p, Automatic 75Ω termination*4
PAL: 0.3 Vp-p, Automatic 75Ω termination*4

LINE B

Composite: Loop-through BNC
1.0 Vp-p, sync negative, Automatic 75Ω termination*4

RGB/Component

BNC

R/R-Y: Non-composite: 0.7 Vp-p, 75Ω
Sync on Green/Green/Y:
Composite: 1 Vp-p, sync negative, 75Ω
Non-composite: 0.7 Vp-p, 75Ω

B/B-Y: Non-composite: 0.7 Vp-p, 75Ω

EXTERNAL SYNC

Loop-through BNC
4 Vp-p negative, Automatic 75Ω termination*4

AUDIO

LINE A Loop-through Phono

-5 dBu, high impedance

LINE B Loop-through Phono

-5 dBu, high impedance

RGB/Component: Phono:

-5 dBu, high impedance



DISPLAY PRODUCTS

*1 The NTSC_{4.43} system refers to an NTSC color system in which the subcarrier frequency is modified to 4.43 MHz.

*2 Capable of 100 to 240 V operation.

*3 The Y/C input has priority over the Composite video input.

*4 75Ω termination is automatically set to OFF when connection is made to the OUT connector.

1-1 Color video monitors

8" PVM-8042Q (NTSC/PAL/SECAM/NTSC_{4.43})

For multi-purpose use in various applications

- Aspect ratio is switchable (4:3 and 16:9) with the 16:9 button on the front panel
- Stable color temperature from beam current feedback circuit
- Analog component level selectable between BETA and SMPTE/N10 by a rear panel slide switch
- NTSC comb filter
- Accepts external sync/sync on Green
- Tally input
- Color temperature D65
- Blue only, H/V delay, Underscan capability
- Built-in speaker and monitoring amplifier
- AC/DC operation
- Front panel degauss button
- EIA standard rack mountable with a second PVM-8042Q (or an optional blank panel MB-509) by using an optional MB-507 rack mounting bracket

Supplied accessories: AC power cord, Mini DIN 8-pin connector with cable (cable length 350mm, 13 7/8 inches), Tally number plates (12 pcs: No.1 to 5, A, B, C, P, R, white × 2 pcs), Operation manual

Optional accessories: TV tuner unit TU-1041U
 Monitor ENG kit VF-505 (Monitor hood and cord reel)
 Rack mounting bracket MB-507
 Blank panel MB-509
 Battery adaptor DC-L10
 Rechargeable lithium-ion battery BP-L60A
 Rechargeable lithium-ion battery BP-L90A
 Rechargeable battery pack NP-1B
 Rechargeable battery pack BP-90A
 Battery case (for BP-90A) DC-210
 Battery charger (for four BP-L60A or BP-L90A) BC-L100
 Battery charger (for four NP-1Bs) BC-1WD
 Battery charger (for four NP-1Bs and four BP-90A) BC-410



Specifications

Video signal system: EIA 525 lines, 60 fields/CCIR 625 lines, 50 fields (switching of EIA to CCIR or vice versa is automatically done)

Color system: NTSC/PAL/SECAM/NTSC_{4.43}*1 (automatically selected)

Picture tube: 22cm (9-inch) Trinitron tube, visible picture size 19.7cm (8-inch) measured diagonally, 70° deflection

Horizontal resolution: 250TV lines at center

Audio power output: Monaural, 0.5W with built-in speaker

Power requirements: AC: 100 to 240V 0.7 to 0.4A, 50/60Hz
 DC: 12V 3.7A

Power consumption: AC: 43W
 DC: 40W

Dimensions: 217(W) × 217(H) × 352.5(D) mm (8 5/8 × 8 5/8 × 14 inches)

Mass: 8.2 kg (18 lb)

VIDEO

LINE A

Composite*2: Loop-through BNC
 1Vp-p, sync negative, Automatic 75Ω termination*3

Y/C*2: Loop-through Mini DIN 4-pin
 Y(luminance): 1Vp-p, sync negative, Automatic 75Ω termination*3

C(chrominance):
 NTSC: 0.286Vp-p, Automatic 75Ω termination*3
 PAL: 0.3Vp-p, Automatic 75Ω termination*3

LINE B

Composite: Loop-through BNC
 1Vp-p, sync negative, Automatic 75Ω termination*3

RGB/Component*4

R/R-Y: Non-composite: 0.7Vp-p, 75Ω
 Sync on Green/G/Y: Composite: 1Vp-p, sync negative, 75Ω
 Non-composite: 0.7Vp-p, 75Ω

B/B-Y: Non-composite: 0.7Vp-p, 75Ω

External sync

Loop-through BNC
 4Vp-p negative, Automatic 75Ω termination*3
 Mini DIN 8-pin
 XLR 4-pin

AUDIO

LINE A

Loop-through Phono
 -5dBu, high impedance

LINE B

Loop-through Phono
 -5dBu, high impedance

RGB/Component

Phono
 -5dBu, high impedance

*1 The NTSC_{4.43} system refers to an NTSC color system in which the subcarrier frequency is modified to 4.43MHz.

*2 The Y/C input has priority over the Composite video input.

*3 75Ω termination is automatically set to OFF when connection is made to the OUT connector.

*4 Video amplitude 100/0/100 colour bars.

1-1 Color video monitors

8" PVM-8040 (NTSC)

Color Video Monitor

- Employs a beam current feedback circuit for stability in the color balance
- Composite video or Y/C input with audio input
- Built-in speaker
- 19-inch EIA standard rack mountable with a second PVM-8040 or the optional blank panel MB-509 by using the optional MB-507 rack mounting bracket

Supplied accessories: AC power cord, Operation manual
Optional accessories: TV tuner unit TU-1041U
Rack mounting bracket MB-507
Blank panel MB-509

Specifications

Video signal system: EIA 525 lines, 50 fields
Color system: NTSC
Picture tube: 22 cm (9-inch) Trinitron tube, visible picture size
19.7 cm (8-inch) measured diagonally, 70° deflection
Horizontal resolution: 250TV lines at center
Audio power output: Monaural, 0.5W with built-in speaker
Power requirements: AC: 120 V*1 0.7 to 0.4 A, 50/60 Hz
Power consumption: 45W
Dimensions: 217 (W) × 217 (H) × 352.5 (D) mm
(8⁵/₈ × 8⁵/₈ × 14 inches)
Mass: 7.8 kg (17 lb 3 oz)

VIDEO

LINE

Composite*2: Loop-through BNC
1.0 Vp-p, sync negative, Automatic 75Ω termination*3
Y/C*2: Loop-through 4-pin mini DIN
Y(luminance):
1 Vp-p, sync negative, Automatic 75Ω termination*3
C(chrominance):
0.286 Vp-p, Automatic 75Ω termination*3

AUDIO

LINE

Loop-through Phono
-5 dBu, high impedance



DISPLAY
PRODUCTS

*1 Capable of 100 to 240 V operation.

*2 The Y/C input has priority over the Composite video input.

*3 75Ω termination is automatically set to OFF when connection is made to the OUT connector.

1-1 Color video monitors

5" PVM-5041Q (NTSC/PAL/SECAM/NTSC_{4.43})

Suitable for picture confirmation in ENG/EPF application and multiple camera monitoring

- Employs a beam current feedback circuit for stability in the color balance
- Switchable aspect ratio (4:3 and 16:9)
- Two inputs: Component (Y/R-Y/B-Y or RGB) input and Composite video input
- Accepts external sync and sync on Green
- Blue only, H/V delay, Underscan capability
- AC/DC operation capability using one NP-1B battery pack or a BP-90A with DC-210 adapter
- Wired remote control capability
- Built-in speaker
- Tally input
- 19-inch EIA standard rack mountable with another two units of PVM-5041Q or two optional blank panel MB-508 by using the optional MB-507 rack mounting bracket

Supplied accessories: AC power cord, Mini DIN 8-pin connector with cable (cable length 350 mm, 13⁷/₈ inches), Operation manual

Optional accessories: TV tuner unit TU-1041U
 Monitor ENG kit VF-504 (Monitor hood and cord reel)
 Rack mounting bracket MB-507
 Blank panel MB-508
 Battery adaptor DC-L10
 Rechargeable battery pack BP-L60A
 Rechargeable battery pack BP-L90A
 Rechargeable battery pack NP-1B
 Rechargeable battery pack BP-90A
 Battery case (for BP-90A) DC-210
 Battery charger (for four BP-L60As or BP-L90As)
 Battery charger (for four NP-1Bs) BC-1WD
 Battery charger (for four NP-1Bs and four BP-90As) BC-410



DISPLAY PRODUCTS

Specifications

Video signal system: EIA 525 lines, 60 fields /CCIR 625 lines, 50 fields (switching of EIA to CCIR or vice versa is automatically done)

Color system: NTSC/PAL/SECAM/NTSC_{4.43}*1 (automatically selected)

Picture tube: 14.7 cm (6-inch) Trinitron tube, visible picture size 13 cm (5-inch) measured diagonally, 70° deflection

Horizontal resolution: 250TV lines at center

Audio power output: Monaural, 0.5 W with built-in speaker

Power requirements: AC: 120 V*2, 50/60 Hz, DC: 12 V 3.2 A

Power consumption: AC: 40 W, DC: 40 W

Dimensions: 146 (W) × 173 (H) × 352.5 (D) mm (5³/₄ × 6⁷/₈ × 14 inches)

Mass: 5.5 kg (12 lb 2 oz)

VIDEO

LINE Loop-through BNC
 1.0 Vp-p, sync negative, Automatic 75Ω termination*3

RGB/Component*4 BNC
 R/R-Y: 0.7 Vp-p, 75Ω
 G/Sync on Green/Y:
 Composite: 1 Vp-p, sync negative, 75Ω
 Non-composite: 0.7Vp-p, 75Ω

B/B-Y: 0.7 Vp-p, 75Ω

External sync BNC
 4 Vp-p negative, 75Ω

AUDIO

LINE Loop-through Phono
 -5 dBu, high impedance

RGB/Component Phono
 -5 dBu, high impedance

*1 The NTSC_{4.43} system refers to an NTSC color system in which the subcarrier frequency is modified to 4.43 MHz.

*2 Capable of 100 to 240 V operation.

*3 75Ω termination is automatically set to OFF when connection is made to the OUT connector.

*4 RGB and Component (Y/R-Y/B-Y) input is selectable with a switch.

1-1 Color video monitors

27" PVM-2950Q (NTSC/PAL/SECAM/NTSC_{4.43})

Cubic Style Monitor

- Switchable aspect ratio(4:3 and 16:9) •A high resolution of 600TV lines •Beam current feedback circuit for stability in the color balance •On-screen menu for adjustment/operation
- Accepts Composite video, Y/C, Component(Y/R-Y/B-Y or RGB) signals •Supplied wireless remote control unit RM-854 controls all monitor functions

Supplied accessories: AC power cord, AC plug holder, Remote controller RM-854, Battery for RM-854, Operation manual

Optional accessories: Speakers: SS-X7A
TV tuner unit TU-1041U

Specifications

Video signal system: EIA 525 lines, 60 fields /CCIR 625 lines, 50 fields (switching of EIA to CCIR or vice versa is automatically done)

Color system: NTSC/PAL/SECAM/NTSC_{4.43}*1 (automatically selected)

Picture tube: 72.9 cm (29-inch), Super Trinitron tube, visible picture size 67.5 cm (27-inch) measured diagonally, 110° deflection

Horizontal resolution: 600TV lines

Audio power output: 7 W + 7 W, 8 to 16Ω

Power requirements: AC 120 V, 50/60 Hz

Power consumption: 165 W (typical)

Dimensions: 687 (W) × 538 (H) × 529 (D) mm (27¹/₈ × 21¹/₄ × 20⁷/₈ inches)

Mass: 52 kg (114 lb 10 oz)

VIDEO

LINE 1/2

Composite*2: Loop-through BNC
1.0 Vp-p, sync negative, Automatic 75Ω termination*3

Y/C*2: Loop-through 4-pin mini DIN
Y(luminance):
1 Vp-p, sync negative, Automatic 75Ω termination*3
C(chrominance):
NTSC: 0.286 Vp-p, Automatic 75Ω termination*3
PAL: 0.3 Vp-p, Automatic 75Ω termination*3

LINE 3

RGB/Component: BNC
R/R-Y: 0.7 Vp-p, 75Ω
Sync on G/G/Y:
Composite: 1 Vp-p, sync negative, 75Ω
Non-composite: 0.7 Vp-p, 75Ω

B/B-Y: 0.7 Vp-p, 75Ω
Sync: Composite sync: BNC
Analog level: 0.5 to 5 Vp-p, high impedance, positive/negative
TTL level: positive/negative
HD/VD separate: BNC
Analog level: 0.5 to 5 Vp-p, high impedance, positive/negative
TTL level: positive/negative

AUDIO

LINE 1/2

Loop-through Phono (×2)
-5 dBu, high impedance

LINE 3

Phono (×2)
-5 dBu, high impedance



RM-854

DISPLAY
PRODUCTS

*1 The NTSC_{4.43} system refers to an NTSC color system in which the subcarrier frequency is modified to 4.43 MHz.

*2 Y/C input has priority over the Composite video input.

*3 75Ω termination is automatically set to OFF when connection is made to the OUT connector.

1-1 Color video monitors

18 PVM-20S1WU (NTSC/PAL/SECAM/NTSC_{4.43})

Color Video Monitor

- 16:9 aspect ratio CRT with dark panel for high contrast image reproduction
- Accepts component (Y/R-Y/B-Y), RGB, Y/C and composite signals
- Beam current feedback circuit for stability in the color balance
- Optional component serial digital interface kits BKM-101C (video)/102 (audio) available
- Switchable aspect ratio (4:3 and 16:9)
- Color temperature D65, D93 or user preset (3200K to 10000K) selectable
- On-screen display for adjustment/operation
- User preset function
- Underscan, Blue Only and H/V delay mode available
- Auto chroma/phase setup*¹
- Accepts external sync
- Digital 3-line comb filter
- Auto/Manual degaussing
- Mountable into an EIA standard rack with the optional SLR-103 slide rail kit

Supplied accessories:

- 20-pin remote cable
- Tally label
- AC power cord
- AC plug holder
- Blind panel kit for SLR-103A*
- Operation manual

Optional accessories:

- BKM-101C (component serial digital interface kit (video))
- BKM-102 (component serial digital interface kit (audio))
- BKM-103 (serial remote control kit for RS-422A)
- SLR-103A (slide rail)*

*Because the bezel protrudes from the rack when you mount the PVM-20S1WU, you cannot completely insert the SLR-103A. The blind panel kit is supplied to cover the exposed part of the slide rail.



Specifications

CRT: AG pitch: Variable pitch 0.65 to 0.75 mm
 Phosphor: P-22
 Visible screen size: 46 cm (18inch) diagonally

Resolution: 300TV lines
 Color system: NTSC, PAL, SECAM, NTSC_{4.43}*²
 Aperture correction: 0 to +6 dB
 Frequency response: LINE: 6 MHz(±3 dB) *Y signal only
 RGB: 6 MHz(±3 dB)

Synchronization: AFC time constant 1.0 mS
 Normal scan: 7% over scan
 Under scan: 5% under scan
 Linearity: H: less than 8% (typical)
 V: less than 7% (typical)

Convergence: Center: 0.6 mm (typical)
 Peripheral: 1.2 mm (typical)

Raster size stability: H: 1.0%
 V: 1.5%

HV regulation: 4.0%
 Color temperature: D65, D93, USER (3200K to 10000K)
 Speaker out: 0.8 W (distortion: less than 5%)
 Power consumption: 100 W (with SDI: 110 W)
 AC input range: AC 220 to 240 V (50/60 Hz)
 Operation temperature: 0 to 35°C
 Storage temperature: -10° to 40°C
 Operation humidity: 35 to 85% (no condensation)
 Storage humidity: 0 to 90%

Dimensions: 482 (W) × 397 (H) × 503 (D) mm
 (19 × 15³/₄ × 19⁷/₈ inches)
 Mass: approx. 25 kg (55 lb 2 oz)
 (including SDI : 26 kg (57 lb 5 oz))

Inputs/Outputs

Line A/B:*³ 1.0 Vp-p±6 dB
 Loop-through BNC automatic 75Ω termination*⁴

Line C:*³ Y: 1.0 Vp-p±6 dB
 C: (NTSC): 0.286 Vp-p±6 dB
 (PAL): 0.3 Vp-p±6 dB
 Loop-through Mini DIN 4-pin automatic 75Ω termination*⁴

RGB/Component (selectable):*⁵
 R/R-Y: 0.7 Vp-p±6 dB
 G: 0.7 Vp-p±6 dB
 Sync on G: 0.3 Vp-p ±6 dB
 Y: 1.0 Vp-p±6 dB
 B/B-Y: 0.7 Vp-p±6 dB
 Loop-through BNC automatic 75Ω termination*⁴

External sync: 4 Vp-p±6 dB, negative
 Loop-through BNC automatic 75Ω termination*⁴

Regulation Compliance:

UL1950, DHHS, FCC Class-A, CSA, DNHW, IC Class-A, EN60950, EN55022 Class-B, EN50082-1, EN60555-2

*¹ Phase setup is for NTSC signals only.

*² The NTSC_{4.43} system refers to an NTSC color system in which the subcarrier frequency is modified to 4.43 MHz

*³ The Y/C input has priority over the Composite video input.

*⁴ 75Ω termination is automatically set to OFF when connection is made to the OUT connector.

*⁵ Video amplitude 100/100 color bars.

1-1 Color video monitors

27" PGM-200R1U

Color Graphic Monitor

•Cubic style color graphic monitor •Accepts VGA signals (fH 31.5kHz, fV 60Hz/70Hz) •The optional BKM-201SC Scan Converter Adaptor enables the monitor to serve as a multi-frequency monitor (capture range: fH 15.6 kHz to 85 kHz, fV 50 Hz to 120 Hz) •Active loop-through output •ID remote control •Wide range power supply (switchable between 100 to 120 V and 220 to 240 V AC)

Supplied accessories: AC power cord (1)
AC plug holder (1)
Remote controller RM-921 with two AA (R6) batteries (1)
Ferrite core (2)
Operating instructions (1)

Optional accessories: Scan converter adaptor BKM-201SC
Cooling fan unit BKM-202FN
Speaker system SS-X7A
TV tuner TU-1041U



Specifications

Picture performance

CRT: 29-inch Super Trinitron tube, visible picture size 675 mm (27-inch viewable area measured diagonally), AG pitch (variable) 0.70 -0.85 mm, Anti-glare and anti-static

Resolution: 640 × 480 dots max.

Scanning frequency: fH 31.5 kHz fV 60/70 Hz, fH 31.25 kHz fV 50 Hz

Frequency response: 16 MHz (-3 dB)

Line pull range: Horizontal: ±500 Hz
Vertical: -8 Hz

Zooming: Within 5%

Color temperature: 9300K (standard)/6500K switchable

Input/Output

Input R, G, B: BNC
0.714 Vp-p / non-composite, 75Ω terminated
1 Vp-p / composite, 75Ω terminated

HD/COMP, VD: BNC
H (or composite) sync, V sync
1 - 5 Vp-p, high impedance

AUDIO (L, R): Phono
500 mV rms, high impedance

Output R, G, B: BNC
0.714 Vp-p / non-composite, 75Ω terminated

HD/COMP, VD: BNC
H (or composite) sync, V sync
5 Vp-p, high impedance

AUDIO (L, R): Phono
Audio gain ±1.0 dB typical
Total harmonic distortion less than 1%
500 mV rms

SP OUT: 8 to 16Ω, 7 W + 7 W (at 8Ω)

12V DC OUT (for BKM-202FN): 12 V DC 200 mA max.

Control S IN/OUT: mini jack, 5 Vp-p

General

Power requirements: 100 V to 120 V / 220 V to 240 V AC selectable
50/60 Hz

Power consumption: PGM-200R1U: 100 to 120 V
max. 183 W
(with BKM-201SC: max. 208.5 W)

Operating temperature: 0°C to 35°C (32°F to 95°F)

Dimensions: 687 (W) × 538 (H) × 520 (D) mm
(27 1/8 × 21 1/4 × 20 1/2 inches)

Mass: Approx. 55 kg (121 lb 4 oz)

Safety Standards

UL 1950, CSA 22.2 No.950, TÜV EN-60950 (CE LVD)
FCC Class A, IC Class A,
CE EN55022 Class-B / EN50082 - 1 / EN60555 - 2,
VCCI-I, DHHS, DNHW, PTB



1-1 Color video monitors

27" PGM-200R2U

Color Graphic Monitor

- Capable of displaying VGA graphics (fH 31.5 kHz, fV 60 Hz), line-doubled NTSC signals (fH 31.5 kHz, fV 60 Hz) and line-doubled PAL signals (fH 31.25 kHz, fV 50 Hz)
- Optional Sony BKM-202FN Cooling Fan can be installed to provide extra ventilation for enclosed areas such as custom-built cabinets (note: Call your authorized Sony dealer for installation details)
- Optional Sony RM-921 Remote Controller
- Wide range power supply switchable between 100 to 120 V and 220 to 240 V AC

Supplied accessories: AC power cord (1)
AC plug holder (1)
Ferrite core (2)
Operating instructions (1)

Optional accessories: RM-921 Remote Controller
BKM-202FN Cooling Fan Unit

Specifications

Picture performance

CRT: 29-inch Super Trinitron tube, visible picture size 675 mm (27-inch viewable area, measured diagonally), AG pitch (variable) 0.70 to 0.85 mm, Anti-glare and Anti-static

Resolution: 640 × 480 dots max.

Scanning frequency: fH: 31.5 kHz fV: 60 Hz
fH: 31.25 kHz fV: 50 Hz

Frequency response: 16 MHz (-3 dB)

Line pull range: Horizontal: ±500 Hz
Vertical: -8 Hz

Zooming: Within 5%

Color temperature: 9300K (standard)/6500K switchable

Input/Output

Input:

R, G, B: BNC
0.714 Vp-p/non-composite, 75Ω terminated
1 Vp-p/composite, 75Ω terminated

HD/COMP, VD: BNC
H (or composite) sync, V sync
5 Vp-p, high impedance

Audio (L, R): Phono
5 dBu, high impedance

Output:

R, G, B: BNC
0.714 Vp-p/non-composite, 75Ω terminated

HD/COMP, VD: BNC
H (or composite) sync, V sync
5 Vp-p, high impedance

Audio (L, R): Phono
Audio gain ±1.0 dB typical
Total harmonic distortion less than 1%, 5 dBu

12 V DC OUT (for BKM-202FN):
12 V DC 200 mA max.

Control S IN/OUT: mini jack

General

Power requirements: 100 V to 120 V/220 V to 240 V AC selectable, 50/60 Hz
Preset: PGM-200R2U: 100 to 120 V
(UL listed for 100 to 120 V operation)

Power consumption: max. 183 W

Operating temperature: 0° to 35° (32°F to 95°F)

Dimensions: 687 (W) × 538 (H) × 520 (D) mm
(27¹/₈ × 21¹/₄ × 20¹/₂ inches)

Mass: Approx. 51.5 kg (113 lb 8 oz)

Regulation Compliance:

UL1950, CSA 22.2 No.950, EN60950,
FCC Class-A, IC Class-A, EN55022 Class-B,
EN50082-1, EN60555-2, VCCI, DHHS, DNHW, PTB



1-1 Color video monitors

13" PGM-100P1MD

Color Graphic Monitor

- High contrast Anti-Reflection Coated Trinitron CRT
- Light output of 160 nits
- Multiscan capability: fH 30 to 65 kHz, fV: 50 to 120 Hz, 640 × 480 to 1280 × 1024 dots
- BNC input with loop-through output
- Built-in speaker
- DC 5V/1A output
- World-wide medical safety approval for professional medical use
- Control inhibit function prevents the inadvertent touching of control panel from changing the settings
- Splash-proof cabinet and flush surface using a sheet-key
- GCX mount or optional swivel stand installation capability
- Power saving function

Supplied accessories: AC power cord (1)
Instruction manual

Optional accessories: Monitor stand SU-556
Signal cable SMF-400
(D-sub 15-pin to 5 BNC cable)

Specifications

General

Scanning frequency: VGA to SVGA
Horizontal: 30 to 65 kHz
Vertical: 50 to 120 Hz

Power requirements: 100 to 120 V, 220 to 240 V, 50/60 Hz
Power consumption: 130 W (max.), 7 W (stand by)

Dimensions: 368 (W) × 343 (H) × 391 (D) mm
(14 1/2 × 13 5/8 × 15 1/2 inches)

Mass: Approx. 15 kg (33 lb 1 oz)

CRT performance

CRT type: 37 cm (14-inch) Trinitron CRT with P-22 phosphors, visible picture size 35.4 cm (13-inch) (min.) measured diagonally, AG pitch 0.25 mm, 90° deflection

Resolution: 640 × 480 to 1280 × 1024 dots

Color temperature: 9300K/5000K/USER

Input performance

R/G/B: Loop-through BNC
0.7 Vp-p, Automatic 75Ω termination

HD/VD: Loop-through BNC
TTL level, Automatic 2.2kΩ termination

Audio performance

Speaker out: Loop-through phono jack -5 dBu, more than 47kΩ
0.2 W, monaural



1-2 Flat panel monitor

PFM-500A1WU

Flat Panel Monitor

•16:9 aspect, 42-inch diagonal Plasma Display Panel •852 × 480 pixels resolution, 16.8 million colors •Accepts signals with horizontal frequency of 15.6 to 80 kHz with built-in high performance scan converter •Option slot •On-Screen Display in five languages •Carrying handles and unique retractable feet for easy handling capability •Self diagnosis function and detachable power supply block for easy maintenance access •Various remote control capabilities: supplied RM-921 Remote controller, Control-S or RS-232C •7 W + 7 W built-in amplifier •Audio monitor out

Supplied accessories: AC power cord (1)
AC plug holder (1)
Remote controller RM-921
AA (R6) battery (2)
Connector cover (2)
Foot support bracket (2)
Ferrite core (2)
Operation manual (1)

Optional accessories: Speaker system SS-X500A
Mounting bracket MB-514



Specifications

Picture performance

Panel:

Resolution: 852 × 480 pixels
Pixel pitch: 1.08 × 1.08 mm
Active area (w/h): 920 × 518 mm
42-inch/1,056 mm (measured diagonally)

Driver: 8-bit RGB
Colors: 16.8 million simultaneously
AC-type Plasma Display Panel with anti-reflection screen

Color system: NTSC, PAL (Composite, Y/C, YUV, RGB), HDTV (RGB, Y/PB/PR)

Capture range: fH: 15.6 kHz to 80 kHz
fV: 50 Hz to 120 Hz

Sampling rate: 12.5 to 40 MHz offset phase max.
Output pixel clock: 30 MHz
Preset signals: 12 format

Inputs/Outputs

RGB 1:

RGB: 0.714 Vp-p, non-composite/1 Vp-p, composite, 75Ω automatic termination, loop-through
YUV: 0.7 Vp-p, non-composite (U/V)/1 Vp-p, composite (Y), 75Ω automatic termination, loop-through
HD/COMP, VD: H (or composite) sync, V sync, 1 - 5 Vp-p, high impedance, loop-through
Audio (L/R): Phono, 500 mV rms, high impedance, loop-through
D-sub 15-pin

RGB 2:

RGB: 0.714 Vp-p/non-composite, 1 Vp-p/composite
External sync: H (or composite) sync, V sync, 1 - 5 Vp-p, high impedance
Audio (L/R): Phono, 500 mV rms, high impedance

LINE:

Composite: BNC, 1 Vp-p, sync negative, 75 Ω automatic termination, loop-through
Y/C: Mini DIN 4-pin connector
Y: 1 Vp-p, sync negative
C: 0.286 Vp-p (NTSC), 0.3 Vp-p (PAL), 75 Ω automatic termination, loop-through
Audio (L/R): Phono, 500 mV rms, high impedance, loop-through

Sync signal: External H/V separate synd or composite sync, Sync on Green automatic selectable
*Tri-level sync is available for HDTV

Audio output:

Speakers terminal: 6 to 16 Ω, 7 W + 7 W (at 8 Ω)
Monitor out (L/R): Phono, 500 mV rms at Volume max., attenuation 0 dB to -∞ (variable)
Total harmonic distortion less than 1 %

Remote:

Control S IN/OUT: Mini Jack, 5 Vp-p
RS-232C: Mini DIN 8-pin



General

Power requirements/
Power consumption: 100 to 120 V AC ±10 %, 50/60 Hz, 3.9 A, 380W
Operating temperature: 0 °C to 35 °C (32 °F to 95 °F)
Storage temperature: -10 °C to 40 °C (14 °F to 104 °F)
Humidity: 0 % to 90 %, no condensation
Dimensions: 1036 × 636 × 152 mm
(40 3/4 × 25 × 6 3/4 inches)
Mass: Approx. 47 kg (Approx. 103 lb 10 oz)

Regulation compliance

UL 1950, CSA 22.2 No. 950,
TÜV EN-60950 (CE LVD) C-tick, FCC Class A,
CE EN55022 Class-A/EN50082-2/EN60555-2,
VCCI-A

1-3 LCD monitor

10.2" LMD-1041

Multi-input LCD Monitor

- Lightweight and compact design
- Accepts not only computer signals (fH: 15 kHz to 36 kHz), but also a wide variety of video signals
- Remarkably beautiful color reproduction with the brilliant full-color, high resolution LCD panel
- Underscan function available
- ID remote control available for easy operation when using multiple monitors
- Stereo speaker available
- Kensington MicroSaver Security System® wire can be attached as a security measure
- On-screen menu for facilitated operation

Supplied accessories: Stand
Screws to secure stand (x2)
AC power cord
Remote control commander RM-LMD1041
Operating instructions

Specifications

General

Video signal system: EIA 525 lines, 60 fields/CCIR 625 lines, 50 fields*
Color system: NTSC/PAL*
Scanning frequency: VGA, Macintosh 13-inch mode
(fH: 15 to 36 kHz, fV: 45 to 73 Hz)
Panel type: a-Si TFT Active Matrix LCD
10.4-inch (264 mm) diagonal, viewable area
10.4-inch (264 mm) (PAL, Computer)
10.2-inch (259.3 mm) (NTSC) diagonal
Pixel area: 211 (H) × 158 (V) mm
(8³/₈ × 6¹/₄ inches)
10.4-inch (264 mm) diagonal
Number of dots: RGB 640 × 480 dots
Display color: Analog full color
Backlight: Cold cathode fluorescent light
Power requirements: AC 100 to 240 V, 50 Hz/60Hz
Power consumption: 28 W max. (normal operation)
7 W max. (standby)
Storage temperature: -20 to 60°C (-4 to 140°F)
Operating temperature: 5 to 35°C (41 to 95°F)
Dimensions: 305 (W) × 215.3 (H) × 57.4 (D) mm
(12 × 8⁴/₉ × 2¹/₄ inches)
(projection not included)
Mass: Approx. 2 kg (4 lb 6 oz)
(stand not included)

Video

Line A: Loop-through BNC
1 Vp-p±2 dB sync negative, 75Ω
Line B: Loop-through Mini DIN 4-pin
Y: 1 Vp-p±2 dB sync negative, 75Ω
C: PAL 0.3 Vp-p±2 dB, 75Ω,
NTSC 0.286 Vp-p±2 dB
Line C: HD D-sub 15-pin
YUV: R-Y/B-Y: 0.7 Vp-p
Y: 1.0 Vp-p (sync 0.3 V)
RGB: R/B/G: 0.7 Vp-p
C sync: 1.0 Vp-p

Computer

Computer: HD D-sub 15-pin (Line C)
RGB: 0.7 Vp-p, 75Ω
Sync:
Composite sync: TTL level negative
Separate sync: TTL level negative/positive
Sync on G: 0.3 Vp-p, negative

Audio

Audio signal: Mini jack
input: Audio input -5 dBu, 47kΩ or more
output: Headphone 16Ω or more
speaker 0.5 W + 0.5 W



* Line reduction PAL signal.

1-4 Monochrome video monitors

13" PVM-136 (EIA/CCIR)

Black & White Monitor

•EIA or CCIR or automatic selection •Switchable aspect ratio(4:3 and 16:9) •A high resolution of 1000TV lines at center •Incorporates a CRT with D65 •H/V delay, Underscan capability •Equipped with a notch filter •Built-in speaker for audio monitoring •Accepts external sync •Tally input •Rack mountable with the optional mounting bracket MB-502B and slide rail kit SLR-102

Supplied accessories: AC power cord, AC plug holders, Number plate (1 set), Remote connector 8-pin, Operation manual
Optional accessories: Rack mounting bracket MB-502B
Slide rail kit SLR-102

Specifications

General

Video signal system: EIA 525 lines, 60 fields /CCIR 625 lines, 50 fields (switching of EIA to CCIR or vice versa is automatically done)
Picture tube: 34 cm (14-inch) CRT, 32.1 cm (13-inch) visible picture measured diagonally, 90° deflection
Horizontal resolution: 1000TV lines at center
Audio power output: Monaural, 0.5 W with built-in speaker
Power requirements: AC 120 V*1, 50/60 Hz
Power consumption: 30 W
Dimensions: 346 (W) × 340 (H) × 330 (D) mm (13⁵/₈ × 13¹/₂ × 13 inches)
Mass: 11 kg (24 lb 4 oz)



VIDEO

Line A/B: Loop-through BNC
1 Vp-p, sync negative, Automatic 75Ω termination*2
External sync: Loop-through BNC
1 to 4 Vp-p negative, Automatic 75Ω termination*2

AUDIO

Line A/B: Loop-through Phono
-5 dBu, high impedance

*1 Capable of 100 to 240 V operation.

*2 75Ω termination is automatically set to OFF when connection is made to the OUT connector.

13" PVM-137 (EIA/CCIR)

Black & White Monitor

•EIA or CCIR or automatic •A high resolution of 1000TV lines at center •Underscan capability •Built-in speaker for audio monitoring •Accepts external sync •Tally input •Rack mountable with the optional mounting bracket MB-502B and slide rail kit SLR-102

Supplied accessories: AC power cord, AC plug holders, Number plate (1 set), Operation manual
Optional accessories: Rack mounting bracket MB-502B
Slide rail kit SLR-102

Specifications

General

Video signal system: EIA 525 lines, 60 fields /CCIR 625 lines, 50 fields (switching of EIA to CCIR or vice versa is automatically done)
Picture tube: 34 cm (14-inch) CRT, 32.1 cm (13-inch) visible picture measured diagonally, 90° deflection
Horizontal resolution: 1000TV lines at center
Audio power output: Monaural, 0.5 W with built-in speaker
Power requirements: AC 120 V*1, 50/60 Hz
Power consumption: 30 W
Dimensions: 346 (W) × 340 (H) × 330 (D) mm (13⁵/₈ × 13¹/₂ × 13 inches)
Mass: 11 kg (24 lb 4 oz)

VIDEO

Line A/B: Loop-through BNC
1 Vp-p, sync negative, Automatic 75Ω termination*2
External sync: Loop-through BNC
1 to 4 Vp-p negative, Automatic 75Ω termination*2

AUDIO

Line A/B: Loop-through Phono
-5 dBu, high impedance



*1 Capable of 100 to 240 V operation.

*2 75Ω termination is automatically set to OFF when connection is made to the OUT connector.

1-4 Monochrome video monitors

13" PVM-135 (EIA/CCIR)

Black & White Monitor

- EIA or CCIR or automatic selection
- A high resolution of 1000TV lines at center
- Built-in speaker for audio monitoring
- Accepts external sync
- Rack mountable with the optional mounting bracket MB-502B and slide rail kit SLR-102

Supplied accessories: AC power cord, AC plug holders, Operation manual
 Optional accessories: Rack mounting bracket MB-502B, Slide rail kit SLR-102

Specifications

General

Video signal system: EIA 525 lines, 60 fields /CCIR 625 lines, 50 fields (switching of EIA to CCIR or vice versa is automatically done)
 Picture tube: 34 cm (14-inch) CRT, 32.1 cm (13-inch) visible picture measured diagonally, 90° deflection
 Horizontal resolution: 1000TV lines at center
 Audio power output: Monaural, 0.5 W with built-in speaker
 Power requirements: AC 120 V*1, 50/60 Hz
 Power consumption: 30 W
 Dimensions: 346 (W) × 340 (H) × 330 (D) mm (13⁵/₈ × 13¹/₂ × 13 inches)
 Mass: 11 kg (24 lb 4 oz)

VIDEO

Line A/B: Loop-through BNC
 1 Vp-p, sync negative, Automatic 75Ω termination*2
 External sync: Loop-through BNC
 1 to 4 Vp-p negative, Automatic 75Ω termination*2

AUDIO

Line A/B: Loop-through Phono
 -5 dBu, high impedance

*1 Capable of 100 to 240 V operation.

*2 75Ω termination is automatically set to OFF when connection is made to the OUT connector.



DISPLAY PRODUCTS

9" PVM-96 (EIA/CCIR)

Black & White Monitor

- EIA/CCIR automatic selection
- Switchable aspect ratio(4:3 and 16:9)
- A high resolution of 900TV lines at center
- Incorporates a CRT with D65
- H/V delay, underscan capability
- Equipped with a notch filter
- Built-in speaker for audio monitoring
- Accepts external sync
- Tally input
- Rack mountable with a second PVM-96 or an optional blank panel MB-509 by using the optional MB-507 rack mounting bracket

Supplied accessories: AC power cord, AC plug holders, Remote connector 8-pin, Operation manual
 Optional accessories: Rack mounting bracket MB-507, Blank panel MB-509

Specifications

General

Video signal system: EIA 525 lines, 60 fields/CCIR 625 lines, 50 fields (switching of EIA to CCIR or vice versa is automatically done)
 Picture tube: 23.0 cm (9-inch) CRT, 21.7 cm (9-inch) visible picture measured diagonally, 90° deflection
 Horizontal resolution: 900TV lines at center
 Audio power output: Monaural, 0.5 W with built-in speaker
 Power requirements: AC 120 V*1, 50/60 Hz
 Power consumption: 28 W
 Dimensions: 217 (W) × 218 (H) × 250 (D) mm (8⁵/₈ × 8⁵/₈ × 9⁷/₈ inches)
 Mass: 5.5 kg (12 lb 2 oz)

VIDEO

Line A/B: Loop-through BNC
 1 Vp-p, sync negative, Automatic 75Ω termination*2
 External sync: Loop-through BNC,
 1 to 4 Vp-p negative, Automatic 75Ω termination*2

AUDIO

Line A/B: Loop-through Phono
 -5 dBu, high impedance

*1 Capable of 100 to 240 V operation.

*2 75Ω termination is automatically set to OFF when connection is made to the OUT connector.



1-4 Monochrome video monitors

9" PVM-97 (EIA/CCIR)

Black & White Monitor

•EIA/CCIR automatic selection •A high resolution of 900TV lines at center •Underscan capability •Built-in speaker for audio monitoring •Accepts external sync •Tally input •Rack mountable with a second PVM-97 or an optional blank panel MB-509 by using the optional MB-507 rack mounting bracket

Supplied accessories: AC power cord, AC plug holders, Operation manual
 Optional accessories: Rack mounting bracket MB-507
 Blank panel MB-509

Specifications

General

Video signal system: EIA 525 lines, 60 fields/CCIR 625 lines, 50 fields (switching of EIA to CCIR or vice versa is automatically done)
 Picture tube: 23.0 cm (9-inch) CRT, 21.7 cm (9-inch) visible picture measured diagonally, 90° deflection
 Horizontal resolution: 900TV lines at center
 Audio power output: Monaural, 0.5 W with built-in speaker
 Power requirements: AC 120 V*1, 50/60 Hz
 Power consumption: 28W
 Dimensions: 217 (W) × 218 (H) × 250 (D) mm (8⁵/₈ × 8⁵/₈ × 9⁷/₈ inches)
 Mass: 5.5 kg (12 lb 2 oz)

VIDEO

Line A/B: Loop-through BNC
 1 Vp-p, sync negative, Automatic 75Ω termination*2
 External sync: Loop-through BNC
 1 to 4 Vp-p negative, Automatic 75Ω termination*2



AUDIO

Line A/B: Loop-through Phono
 -5 dBu, high impedance

*1 Capable of 100 to 240 V operation.

*2 75Ω termination is automatically set to OFF when connection is made to the OUT connector.

9" PVM-95 (EIA/CCIR)

Black & White Monitor

•EIA/CCIR automatic selection •A high resolution of 900TV lines at center •Built-in speaker for audio monitoring •Accepts external sync •Rack mountable with a second PVM-95 or an optional blank panel MB-509 by using the optional MB-507 rack mounting bracket

Supplied accessories: AC power cord, AC plug holders, Operation manual
 Optional accessories: Rack mounting bracket MB-507
 Blank panel MB-509

Specifications

General

Video signal system: EIA 525 lines, 60 fields/CCIR 625 lines, 50 fields (switching of EIA to CCIR or vice versa is automatically done)
 Picture tube: 23.0 cm (9-inch) CRT, 21.7 cm (9-inch) visible picture measured diagonally, 90° deflection
 Horizontal resolution: 900TV lines at center
 Audio power output: Monaural, 0.5 W with built-in speaker
 Power requirements: AC 120 V*1, 50/60 Hz
 Power consumption: 28 W
 Dimensions: 217 (W) × 218 (H) × 250 (D) mm (8⁵/₈ × 8⁵/₈ × 9⁷/₈ inches)
 Mass: 5.5 kg (12 lb 2 oz)

VIDEO

Line A/B: Loop-through BNC
 1Vp-p, sync negative, Automatic 75Ω termination*2
 External sync: Loop-through BNC,
 1 to 4 Vp-p negative, Automatic 75Ω termination*2

AUDIO

Line A/B: Loop-through Phono
 -5 dBu, high impedance



*1 Capable of 100 to 240 V operation.

*2 75Ω termination is automatically set to OFF when connection is made to the OUT connector.

1-4 Monochrome video monitors

4" PVM-4B1U (EIA/CCIR)

Black and White Video Monitors

- Ideal for camera monitoring in video studio and surveillance systems with multiple camera installations
- Compatible with EIA and CCIR systems (automatically selected)
- High resolution of 500TV lines
- Stable picture reproduction with the high voltage regulation circuit
- Accepts an external sync signal
- Loop-through video and sync terminals with automatic 75Ω termination
- Can be mounted in a standard 19-inch rack
- Individual power and individual controls available

Supplied accessories: AC power cord (1)
AC plug holder (1set)
Operating instructions (1)

Specifications

General

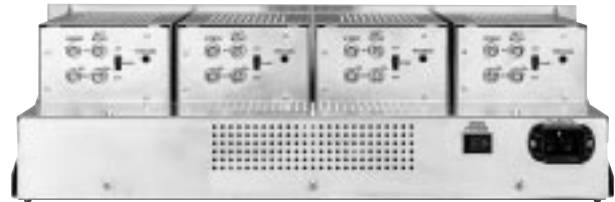
System: EIA 525 lines/60 fields, CCIR 625 lines/50 fields (automatically selected)
Frequency response: 10 MHz (-3 dB)
Power requirements: AC 100 to 240 V*, 50/60 Hz
Power consumption: 59 W
Dimensions: 483 (W) × 133 (H) × 356 (D) mm
(19¹/₈ × 5¹/₄ × 14¹/₈ inches)
Mass: 11.7 kg (25 lb 13 oz)
Operating temperature: 0 to 35°C (32 to 95°F)
Operating humidity: 0 to 90%

CRT performance

CRT type: 10 cm (4-inch) CRT, visible picture size 9.4 cm (3³/₄ inches) (min.) measured diagonally, 50° deflection
Resolution: 500TV lines

Picture performance

Normal scan: 7% overscan
Linearity: H: less than 8%, V: less than 7%



Input performance

VIDEO: Loop-through BNC
1 V_{p-p}±6 dB, sync negative, automatic 75Ω termination
Loop-through BNC

EXT SYNC: 0.5 to 4 V_{p-p}, sync negative, automatic 75Ω termination

Safety regulations: UL1950, CSA950, DHHS, DNHW, FCC Class A, IC Class A

*UL listed for 120 V operation.

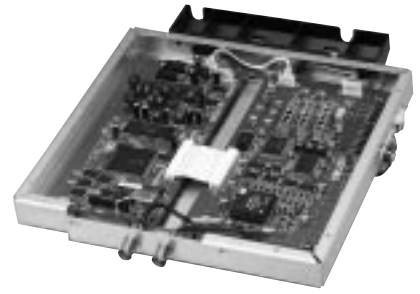
1-5 Monitor accessories

BKM-101C/102

Component Serial Digital Interface Kit 101C (video)/102(audio)

- Component serial digital interface for PVM-20M4U/20M2U/20S1WU/14M4U/14M2U

Mass: BKM-101C:820 g (1 lb 13 oz)
870 g (1 lb 15 oz)
(with installation kit for PVM-20M4U/20M2U/20S1WU)
BKM-102: 130 g (4.6oz)



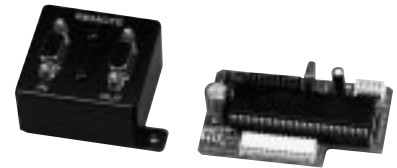
BKM-101C/102

BKM-103

Serial Remote Control Kit

- RS-422 serial remote control kit for PVM-20M4U/20M2U/20S1WU/14M4U/14M2U

Mass: 157 g (5.5oz)



DISPLAY
PRODUCTS

RM-921

Remote Controller

- Remote controller for PGM-200R1U/200R2U

Dimensions: 43 (W) × 213 (H) × 25 (D) mm
(1 3/4 × 8 1/2 × 1 inches)

Mass: 125 g (4 oz) with batteries



BKM-201SC

Scan Converter Adaptor

- Scan converter adaptor for PGM-200R1U
- Capable of converting signals with fH 15.6 to 85kHz into VGA

Format Conversion
Capture range: fH 15.6 kHz to 85 kHz, fV 50 Hz to 120 Hz
Sampling rate: 17.9 to 40 MHz offset phase max.
Output pixel clock: 25.2 to 38 MHz max.
Line doubler: Line doubled vertically for each field

Dimensions: 88.0 (W) × 439.0 (H) × 254.6 (D) mm

(3 1/2 × 17 3/8 × 10 1/8 inches)

Mass: Approx. 2.35 kg (5 lb 3 oz)



1-5 Monitor accessories

BKM-202FN

Cooling Fan Unit

- Designed exclusively for the PGM-200R1U/200R2U
- Prevents heat build up inside the cabinet by powerfully ventilating the air out of the monitor
- DC 12 V supplied from the monitor

Dimensions: 80 (W) × 80 (H) × 25 (D) mm
(3 1/4 × 3 1/4 × 1 inches)

Mass: 125 g (4 oz)



MB-502B

Mounting Bracket

- Bracket for PVM-14M4U/14M2U/14M2MDU/14N2U/14N1U/136/137/135

Dimensions: 483 (W) × 355 (H) × 302 (D) mm
(19 1/8 × 14 × 12 inches)

Mass: 3.8 kg (8 lb 6 oz)



DISPLAY
PRODUCTS

MB-507

Mounting Bracket

- Bracket for PVM-8044Q/8043MD/8041Q/8040/5041Q/96/97/95

Dimensions: 482 (W) × 221 (H) × 395 (D) mm
(19 × 8 3/4 × 15 5/8 inches)

Mass: 2.6 kg (5 lb 11 oz)



MB-508

Mounting Attachment

- Blank panel for PVM-5041Q

Dimensions: 146(W) × 168.5(H) × 63(D) mm
(5 3/4 × 6 3/4 × 2 1/2 inches)

Mass: 0.2 kg (7 oz)



1-5 Monitor accessories

MB-509

Mounting Attachment

•Blank panel for PVM-8045Q/8043MD/8042Q/8040/96/97/95

Dimensions: 217 (W) × 212.5 (H) × 63 (D) mm
(8⁵/₈ × 8³/₈ × 2¹/₂ inches)

Mass: 0.4 kg (14 oz)



MB-510

Mounting Bracket

•Bracket for TU-1041U

Dimensions (with 2 TU-1041U):
482(W) × 49.3(H) × 361(D) mm
(19 × 2 × 14¹/₄ inches)

Mass: 0.3 kg (10 oz)



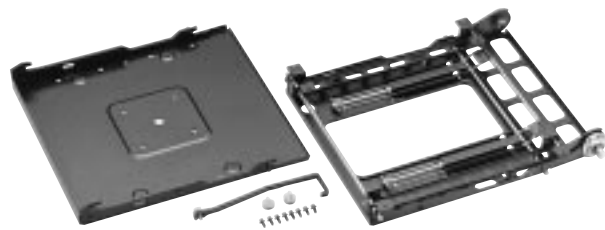
MB-514

Mounting Bracket for PFM-500A1WE

•For wall-mounting installation •Monitors can be tilted 0 to 20 degrees downward from the wall •Separate parts for easy installation

Dimensions: Bracket for wall: 455(W) × 500(H) × 57(D) mm
(18¹/₁₆ × 19¹/₁₆ × 2¹/₄ inches)
Bracket for monitor: 470(W) × 535(H) × 56.5(D) mm
(18⁹/₈ × 21¹/₈ × 2¹/₄ inches)

Mass: Bracket for wall: Approx. 5.2 kg (11 lb 7 oz)
Bracket for monitor: Approx. 5.8 kg (12 lb 13 oz)



VF-504

Monitor ENG Kit

•Monitor hood and cord reel for PVM-5041Q

Dimensions: Hood:
159 (W) × 172 (H) × 160 (D) mm
(6³/₈ × 6⁷/₈ × 6³/₈ inches)
(with PVM-5041Q):
159 (W) × 178 (H) × 567.5 (D) mm
(6³/₈ × 7¹/₈ × 22³/₈ inches)

Mass: 0.4 kg (14 oz)



1-5 Monitor accessories

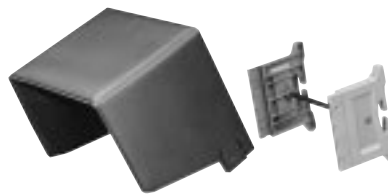
VF-505

Monitor ENG Kit

•Monitor hood and cord reel for PVM-8045Q/8042Q

Dimensions: Hood:
230 (W) × 215 (H) × 200 (D) mm
(9¹/₈ × 8¹/₂ × 7⁷/₈ inches)
(with PVM-8044Q/8041Q):
230 (W) × 222 (H) × 607.5 (D) mm
(9¹/₈ × 8³/₄ × 24 inches)

Mass: 0.5 kg (17 oz)



DC-L10

Battery Adaptor

•Attaches a rechargeable Lithium-ion battery pack BP-L60A or BP-L90A to PVM-8045Q/8042Q/5041Q •Retractable handle •Easily detachable upper part of adaptor bracket

Specification

Operating time*:

BP-L60A Approx. 100 min. (typical)

BP-L90A Approx. 160 min. (typical)

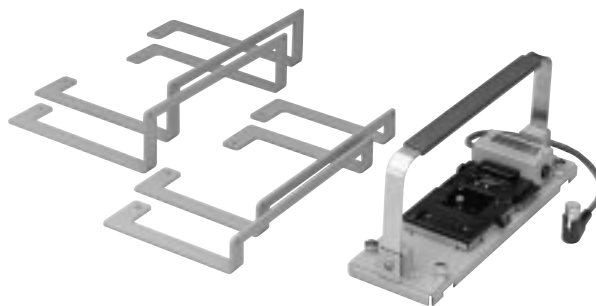
*Actual operating times may vary.

Dimensions: 315(W) × 146(H) × 100(D) mm
(12¹/₂ × 5³/₄ × 4 inches)

Mass: With attachment frames for 9-inch monitor: 2.35 kg (5 lb 19 oz)
With attachment frames for 6-inch monitor: 2.15 kg (4 lb 28 oz)

DC output: DC 12 V, Right angle XLR 4-pin connector (female)

DC fuse: 5 A



DISPLAY
PRODUCTS

DCC-XLR4

Car Battery Cord

•Car battery cord for PVM-8045Q/8042Q/5041Q and TU-1041U

Power requirements:

12 V/24 V DC

Output voltage: 12 V:5 A

Cord length: 3 m (9 ft 9 inches)

Mass: 175 g (6 oz)



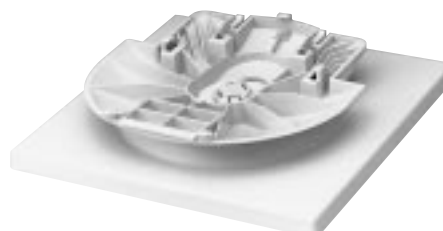
SU-556

Monitor Stand

•Stand for PGM-100P1MD

Dimensions: 240 (W) × 57 (H) × 238 (D) mm
(9¹/₂ × 2¹/₄ × 9³/₈ inches)

Mass: Approx. 450 g (1 lb)



1-5 Monitor accessories

SS-X7A

Speaker System

- High quality stereo sound by two-way bass-reflex speaker system with cone-type woofer and tweeter

Dimensions: 183 (W) × 280 (H) × 90 (D) mm
(7¹/₄ × 11¹/₈ × 3⁵/₈ inches)

Mass: Approx. 1.9 kg per speaker
(4 lb 3 oz)



SS-X500A

Speaker System

- Speaker design matches that of PFM-500A1W
- Can be attached to the monitor or mounted separately
- Effective frequency range: 70 Hz to 20000 Hz
- Characteristic sensitivity level: 88 dB (1 W, 1 m)
- Input capability: 120 W

Dimensions: 159(W) × 634(H) × 90.3(D)mm
(2¹/₄ × 25 × 3⁵/₈ inches)

Mass: Approx. 3.5 kg per speaker
(Approx. 7 lb 11 oz)



TU-1041U

TV Tuner Unit

- Receives Multi-band American TV standards VHF/UHF and Cable TV channels •DC operation capability
- Mountable with 5/8-inch monitors with the optional mounting bracket MB-512

Dimensions: 212 (W) × 49.3 (H) × 361 (D) mm
(8³/₈ × 2 × 14¹/₄ inches)

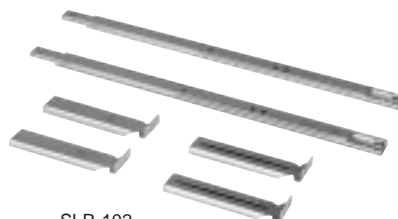
Mass: Approx. 2 kg (4 lb 7 oz)



SLR-102/103A

Slide Rail Kit

- SLR-102 for PVM-14M4U/14M2U/14M2MDU/14N6U/14N5U/136/137/135 (used with MB-502B)
- SLR-103A for PVM-20M4U/20M2U/20S1WU/20M2MDU/20N6U/20N5U



SLR-102



SLR-103A